

2.3 ACRE BUILDABLE LOT



Lot 288 Seapuit River Rd A, Oyster Harbors, Osterville, MA

Price: \$ 3,100,000
Assessment: \$ 2,384,900 / 2025
Taxes: \$ 19,101 / 2025
Acres: 2.3
Water: Town
Sewer: Private

Located in the heart of Oyster Harbors - Cape Cod's premier golf community - this 2.3-acre lot presents an outstanding opportunity to create a legacy estate. Set within the highly sought after village of Osterville, known for its timeless charm and distinguished properties, this expansive parcel offers ample space to design a custom estate with room for a main house, guest house, pool and pool house. For those seeking additional space or compound potential, abutting parcels may also be acquired. Information herein is not guaranteed or warranted and should be verified by any person who is looking at this property to purchase.

**BERKSHIRE
HATHAWAY**
HOMESERVICES

ROBERT PAUL
PROPERTIES



Map printed on: 7/1/2025

0 333 667 Feet

Approx. Scale: 1 inch = 333 feet



This map is for illustration purposes only. It is not adequate for legal boundary determination or regulatory interpretation. This map does not represent an on-the-ground survey. It may be generalized, may not reflect current conditions, and may contain cartographic errors or omissions.

Parcel lines shown on this map are only graphic representations of Assessor's tax parcels. They are not true property boundaries and do not represent accurate relationships to physical objects on the map such as building locations.

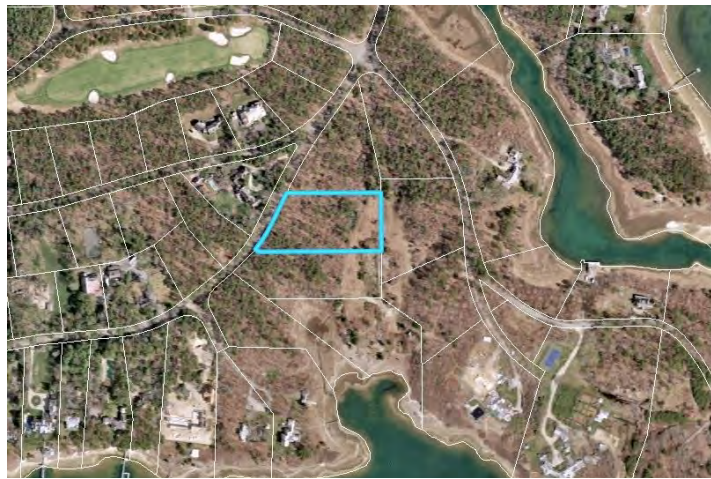
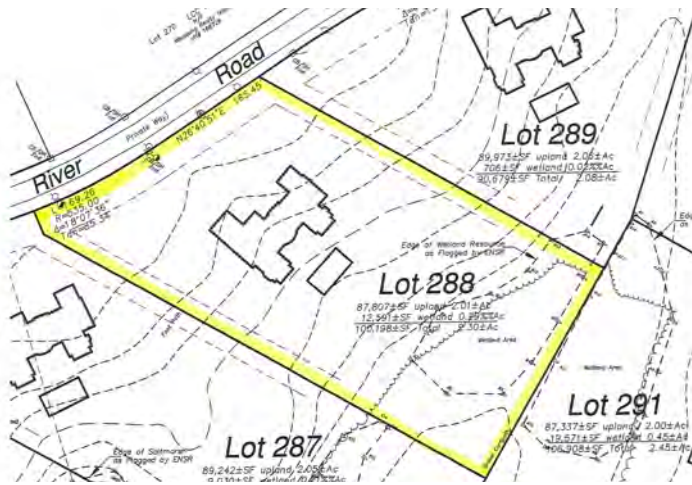


Town of Barnstable GIS Unit

367 Main Street, Hyannis, MA 02601

508-862-4624

gis@town.barnstable.ma.us



Exclusively Represented by

Robert B. Kinlin

RKinlin@robertpaul.com - 508.648.2739

Berkshire Hathaway HomeServices Robert Paul Properties

www.RobertPaul.com

©2025 BHH Affiliates, LLC. An independently operated subsidiary of HomeServices of America, Inc., a Berkshire Hathaway affiliate, and a franchisee of BHH Affiliates, LLC. Berkshire Hathaway HomeServices and the Berkshire Hathaway HomeServices symbol are registered service marks of Columbia Insurance Company, a Berkshire Hathaway affiliate. Equal Housing Opportunity.